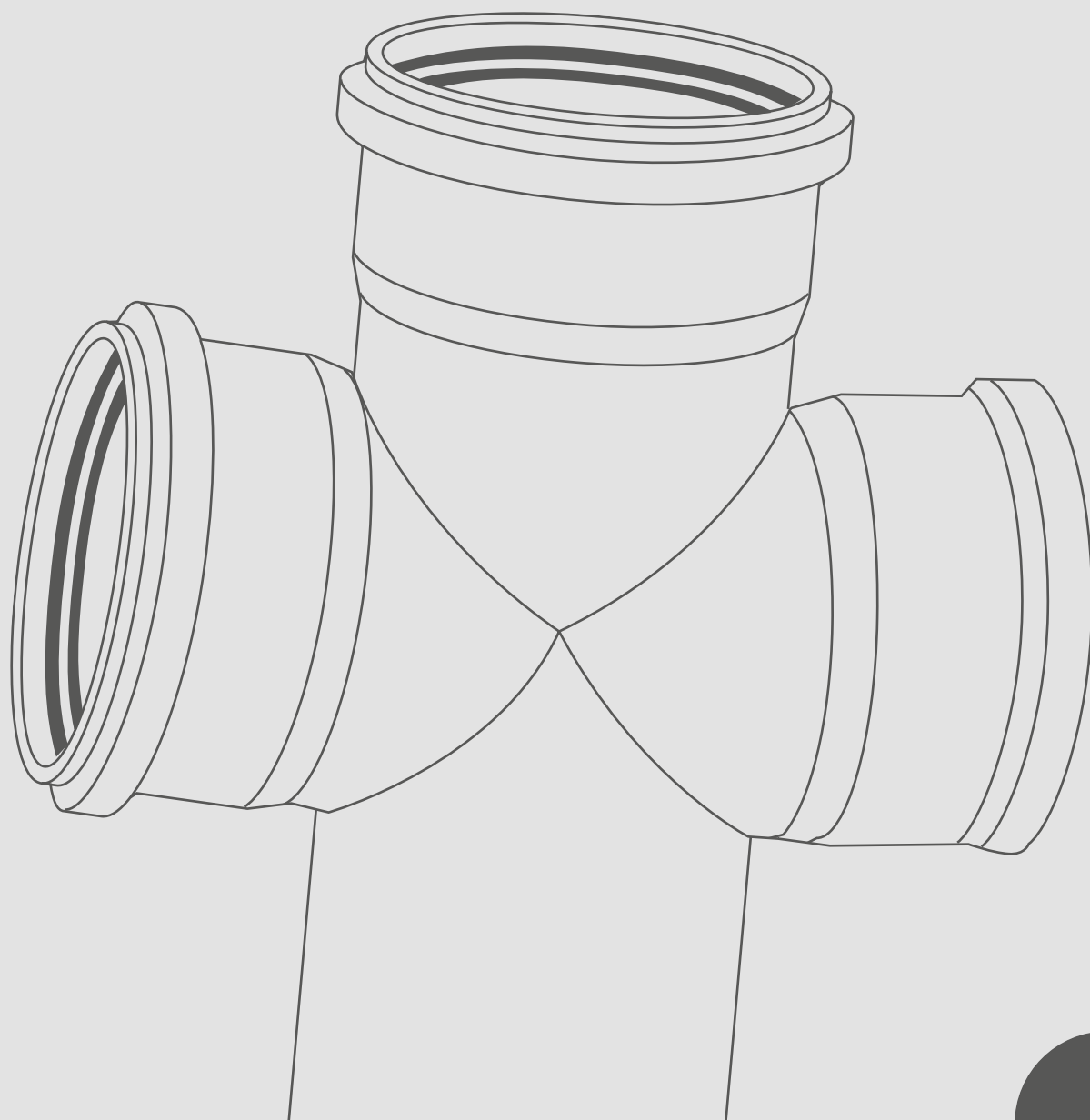


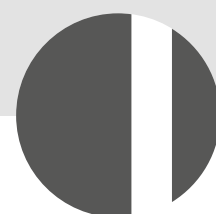
# SILERE



## **Niskoszumowy system kanalizacji wewnętrznej budynków**

*Soundproof waste and drainage  
system inside the buildings*

*Système pour l'évacuation silencieuse  
des eaux à l'intérieur du bâtiment*

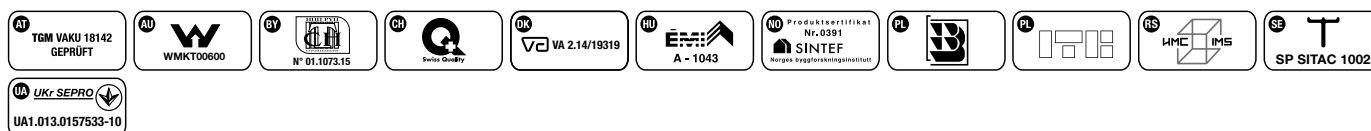


MADE IN ITALY

**04/2022**  
KATALG/CENNIK  
CATALOGUE/PRICE LIST - CATALOGUE/TARIF  
L02-453/7

**valsir**<sup>®</sup>  
QUALITY FOR PLUMBING

HOMOLOGACJE  
QUALITY APPROVALS  
HOMOLOGATIONS



LEGENDA  
LEGEND  
LÉGENDE

Skróty Abbreviations Abréviations	Jednostki miary Measurement units Unité de mesure	Opis Description Désignation
KOD	-	Kod towaru - Item code - Référence de l'article
CL	-	Kod rabatu - Discount category - Groupe produit
pln/szt	pln	Cena za sztukę - Price for piece - Prix unitaire, poids
pln/m	pln	Cena za metr - Price per meter - Prix au mètre
D	mm	Średnica - Diameter - Diamètre
DN	mm	Średnica nominalna - Nominal diameter - Diamètre nominale
	n°	Ilość w opak. jednostkowym - Pieces per pack - Prix par conditionnement
	n°	Ilość na warstwie palety - Pieces per pallet layer - Pièce par surpalette
	n°	Ilość na palecie - Pieces per pallet - Pièces par palette
HxLxP	mm	Wymiary palety - Pallet dimensions - Dimensions de la palette
$\alpha$	°	Kąt - Sexagesimal degree - Angle
Mod.	-	Model - Model - Modèle
Mat.	-	Materiał - Material - Matière
Art.	-	Towar - Item - Article
Conf.	-	Sposób pakowania - Packaging - Conditionnement

Wszystkie wymiary podano w mm z wyjątkiem przypadków, w których zostały wyrażone inaczej.  
All the dimensions in this price list are in mm except as otherwise expressed.  
Toutes les dimensions reportées dans le tarif sont exprimées en mm si aucune autre précision.

Produkty Valsir dostarczone są w pełnych opakowaniach zgodnie z ilościami wyszczególnionymi w katalogu.

Towary zamawiane w ilościach nieodpowiadających pełnym opakowaniom, zostaną zaokrąglone.

Valsir S.p.A. zastrzega sobie prawo do modyfikacji właściwości produktów przedstawianych w katalogu bez uprzedniego informowania. Ilustracje produktów w katalogu są przedstawione tylko w celach informacyjnych, dlatego też wygląd ich może odbiegać od rzeczywistego.

Valsir pragnie z góry przeprosić za ewentualne błędy drukarskie w niniejszym katalogu.

W przypadku natrafienia na jakiegokolwiek błędów prosimy o poinformowanie nas o tym i przesłanie nam własnych sugestii i komentarzy.

Valsir products are delivered according to the package quantity specified in this price list. Product requests not matching our package quantities will be rounded up, to the package quantity or a multiple of the same.

Valsir S.p.A. reserves the right to modify the characteristics of the products shown in this price list at any time. The colours in this price list are shown for representation purposes only.

To learn more about our sales conditions, warranty terms and to send us your opinion of Valsir, please refer to our services Card (booklet L02-416) or the "SUPPORT" section of our web site [www.valsir.it](http://www.valsir.it).

Please feel free to notify us your comments.

Les livraisons des produits Valsir sont effectuées au conditionnement complet. Toutes commandes ne correspondant pas au conditionnement seront arrondies sans préavis au conditionnement supérieur.

Valsir S.p.A. se réserve le droit de modifier à tout moment les caractéristiques des produits présentés sur ce tarif. Les couleurs reproduites dans ce tarif sont à titre indicatif.

Pour connaître les conditions de vente, les termes de garantie et exprimer son niveau de satisfaction sur Valsir, nous vous prions de vous reporter au Document des services (fascicule L02-433) et à la session «SUPPORT» du site web : [www.valsir.fr](http://www.valsir.fr).

Nous invitons tous les utilisateurs à nous faire part de leurs éventuelles observations.



## SILERE®: NUMER JEDEN WŚRÓD NISKOSZUMOWEJ KANALIZACJI KIELICHOWEJ

## SILERE®: THE NUMBER ONE PUSH-FIT SOUNDPROOFED WASTE SYSTEM

## SILERE® : L'EVACUATION INSONORISEE A JOINT PAR EXCELLENCE

### CHARAKTERYSTYKA

- Doskonałe właściwości dźwiękochłonne. Przy prędkości przepływu 2 l/s poziom hałasu 6 dB(A) zgodnie z normą EN 14366.
- Wysoka odporność mechaniczna w niskich temperaturach.
- Szybka i łatwa instalacja, bez użycia specjalistycznych narzędzi, dzięki kielichowemu połączeniu.
- Odporność na chwilowy przepływ medium w temperaturze do 95°C.
- Wysoka odporność chemiczna na substancje rozpuszczone w domowych i przemysłowych ściekach.
- Łatwe połączenie z innymi systemami kanalizacyjnymi (żeliwo, PP, PVC, itp).
- Niski współczynnik rozszerzalności cieplnej.
- Kielichowe połączenie nie wymaga stosowania szkodliwych rozpuszczalników czy klejów.
- Szeroki zakres średnic od DN 50 do 160 mm.
- Możliwość recyklingu produktu, procesy wykorzystywane do jego produkcji oparte są na zasadach Green Building.

### CHARACTERISTICS

- This system offers an excellent soundproofing capacity. At a flow rate of 2 l/s noise levels of 6 dB(A) were measured, in compliance with EN 14366.
- This material provides a high impact resistance at low temperatures.
- Extremely simple and fast to install without the need for any special tools thanks to the push-fit connection.
- Resistance to intermittent discharges at temperatures as high as 95°C.
- High chemical resistance to the substances dissolved in civil and industrial waste waters.
- Easily connected to other waste systems (cast iron, PP, PVC, etc).
- Low coefficient of thermal expansion.
- Push-fit sockets do not require the use of harmful solvents or glues.
- Wide range of diameters from DN 50 to 160 mm.
- The product, its recyclability and the production processes used are based on the Green Building principles.

### CARACTERISTIQUES

- Excellentes performances de réduction sonore du système : avec un débit de 2 l/s le niveau sonore relevé selon la norme EN 14366 est de 6 dB(A).
- Matière caractérisée par une résistance élevée à basse température.
- Rapidité et facilité de mise en oeuvre sans l'aide d'outillage particulier grâce à la technologie de raccordement à emboiture avec joint.
- Résistance aux évacuations jusqu'à une température de pointe de 95°C.
- Résistance chimique élevée au contact de substances dissoutes dans les eaux d'évacuation domestiques et industrielles.
- Compatibilité de raccordement avec les autres systèmes d'évacuation (fonte, PP, PVC, etc...).
- L'emboiture à joint ne requiert aucune utilisation supplémentaire de colle ou de solvants nocifs.
- Large gamme du diamètre DN 50 au 160 mm.
- Dans l'optique du respect de l'environnement et préservation des ressources, Silère se réfère aux principes de Green Building.

# ASORTYMENT KANALIZACJI SILERE

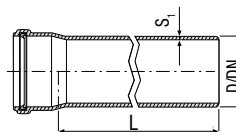
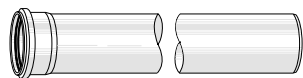
SILERE WASTE RANGE


GAMME ÉVACUATION SILERE

## Rura jednokielichowa

Single socket pipe

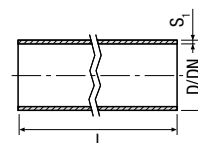
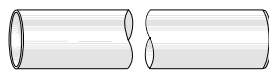
Tube avec emboiture




KOD	D	DN	s <sub>1</sub>	L	kg		CL	pln/szt
VS0220001	58	50	4,2	150	0,284	4	SL01	28,40
VS0220003	58	50	4,2	250	0,397	4	SL01	36,41
VS0220005	58	50	4,2	500	0,697	4	SL01	53,14
VS0220007	58	50	4,2	1000	1,274	16	SL01	87,24
VS0220009	58	50	4,2	2000	2,500	16	SL01	155,06
VS0220011	58	50	4,2	3000	3,750	16	SL01	222,85
VS0220021	78	70	4,6	150	0,445	4	SL01	30,23
VS0220023	78	70	4,6	250	0,624	4	SL01	38,47
VS0220025	78	70	4,6	500	1,059	4	SL01	56,35
VS0220027	78	70	4,6	1000	1,967	16	SL01	91,84
VS0220029	78	70	4,6	2000	3,750	16	SL01	162,83
VS0220031	78	70	4,6	3000	5,500	16	SL01	233,60
VS0220041	90	90	4,6	150	0,491	4	SL01	35,04
VS0220043	90	90	4,6	250	0,722	4	SL01	43,77
VS0220045	90	90	4,6	500	0,013	4	SL01	64,58
VS0220047	90	90	4,6	1000	2,282	12	SL01	105,57
VS0220049	90	90	4,6	2000	4,250	12	SL01	188,04
VS0220050	90	90	4,6	3000	6,500	12	SL01	276,64
VS0220051	110	100	5,6	150	0,750	4	SL01	40,07
VS0220053	110	100	5,6	250	1,046	4	SL01	48,11
VS0220055	110	100	5,6	500	1,753	4	SL01	73,05
VS0220057	110	100	5,6	1000	3,500	15	SL01	120,03
VS0220059	110	100	5,6	2000	6,250	15	SL01	215,07
VS0220061	110	100	5,6	3000	9,500	15	SL01	314,01
VS0220071	135	125	5,6	150	1,037	4	SL01	55,89
VS0220073	135	125	5,6	250	1,413	4	SL01	72,13
VS0220075	135	125	5,6	500	2,405	4	SL01	103,10
VS0220077	135	125	5,6	1000	4,500	8	SL01	172,44
VS0220079	135	125	5,6	2000	8,500	8	SL01	311,92
VS0220081	135	125	5,6	3000	11,750	8	SL01	429,92
VS0220091	160	150	5,6	150	1,205	4	SL01	64,58
VS0220093	160	150	5,6	250	1,650	4	SL01	81,79
VS0220095	160	150	5,6	500	2,759	4	SL01	127,80
VS0220097	160	150	5,6	1000	5,250	8	SL01	217,32
VS0220099	160	150	5,6	2000	5,000	8	SL01	390,00
VS0220101	160	150	5,6	3000	14,500	8	SL01	579,90

## Rura bez kielicha

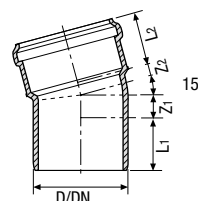
Plain ends pipe  
Tube lisse




KOD	D	DN	s <sub>1</sub>	L	kg		CL	pln/m
VS0220501	58	50	4,2	5000	1,120	180	SL01	73,05
VS0220503	78	70	4,6	5000	1,902	180	SL01	78,54
VS0220505	90	90	4,6	5000	2,140	120	SL01	99,62
VS0220507	110	100	5,6	5000	3,220	150	SL01	108,13
VS0220509	135	125	5,6	5000	3,960	120	SL01	142,21
VS0220511	160	150	5,6	5000	4,700	70	SL01	195,36

## Kolano 15°

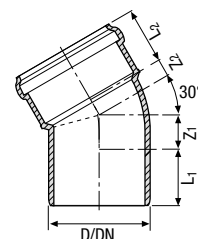
15° bend  
Coude 15°




KOD	D	DN	Z <sub>1</sub>	L <sub>1</sub>	Z <sub>2</sub>	L <sub>2</sub>	kg		CL	pln/szt
VS0221001	58	50	4	70	8	55	0,185	4	SL02	43,70
VS0221011	78	70	6	60	10	60	0,261	4	SL02	43,70
VS0221021	90	90	8	60	8	60	0,305	4	SL02	58,08
VS0221031	110	100	27	61	15	65	0,521	4	SL02	62,33
VS0221041	135	125	29	64	10	70	0,720	4	SL02	97,32
VS0221051	160	150	13	66	19	70	0,914	4	SL02	134,84

## Kolano 30°

30° bend  
Coude 30°

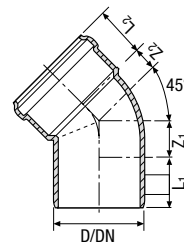



KOD	D	DN	Z <sub>1</sub>	L <sub>1</sub>	Z <sub>2</sub>	L <sub>2</sub>	kg		CL	pln/szt
VS0221003	58	50	8	70	16	55	0,190	4	SL02	44,31
VS0221013	78	70	11	60	30	60	0,276	4	SL02	44,31
VS0221023	90	90	14	60	14	60	0,330	4	SL02	61,25
VS0221033	110	100	37	61	19	65	0,568	4	SL02	64,23
VS0221043	135	125	38	64	45	70	0,797	4	SL02	99,23
VS0221053	160	150	24	66	30	70	1,031	4	SL02	134,84

### Kolano 45°

45° bend

Coude 45°

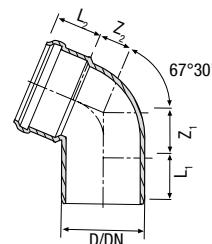
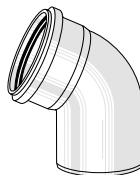



KOD	D	DN	Z <sub>1</sub>	L <sub>1</sub>	Z <sub>2</sub>	L <sub>2</sub>	kg		CL	pln/szt
VS0221005	58	50	28	70	17	55	0,196	4	SL02	46,44
VS0221015	78	70	37	60	21	60	0,302	4	SL02	48,56
VS0221025	90	90	22	60	20	60	0,343	4	SL02	61,93
VS0221035	110	100	44	61	28	65	0,611	4	SL02	67,22
VS0221045	135	125	50	64	34	70	0,875	4	SL02	100,09
VS0221055	160	150	30	66	42	70	1,148	4	SL02	134,22

### Kolano 67°30'

67°30' bend

Coude 67°30'

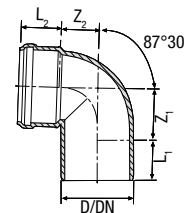
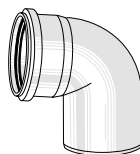



KOD	D	DN	Z <sub>1</sub>	L <sub>1</sub>	Z <sub>2</sub>	L <sub>2</sub>	kg		CL	pln/szt
VS0221007	58	50	32	70	21	55	0,204	4	SL02	43,70
VS0221017	78	70	26	60	26	60	0,322	4	SL02	45,78
VS0221037	110	100	44	61	44	65	0,699	4	SL02	63,19

### Kolano 87°30'

87°30' bend

Coude 87°30'

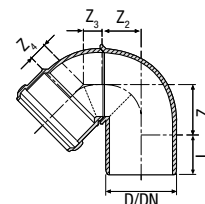
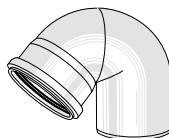


KOD	D	DN	Z <sub>1</sub>	L <sub>1</sub>	Z <sub>2</sub>	L <sub>2</sub>	kg		CL	pln/szt
VS0221009	58	50	47	70	32	55	0,229	4	SL02	49,82
VS0221019	78	70	62	60	42	60	0,359	4	SL02	49,82
VS0221029	90	80	49	60	42	60	0,427	4	SL02	65,96
VS0221039	110	100	78	61	58	65	0,743	4	SL02	70,61
VS0221049	135	125	96	64	102	70	1,096	4	SL02	113,90
VS0221059	160	150	83	66	89	70	1,496	4	SL02	160,56

## Kolano wentylacyjne

Venting bend

Coude de ventilation

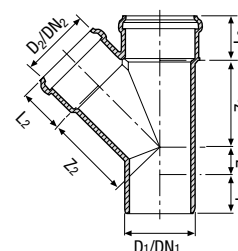
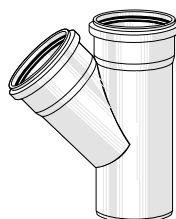


KOD	D	DN	Z <sub>1</sub>	L <sub>1</sub>	Z <sub>2</sub>	Z <sub>3</sub>	Z <sub>4</sub>	kg		CL	pln/szt
VS0232011	110	100	78	61	61	29	28	0,991	2	SL02	297,47

## Trójnik 45°

45° branch

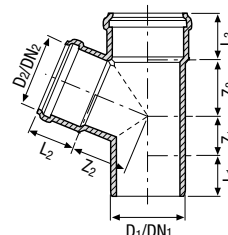
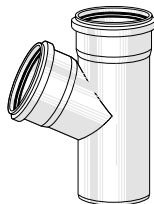
Culotte 45°



KOD	D <sub>1</sub> /D <sub>2</sub>	DN <sub>1</sub> /DN <sub>2</sub>	Z <sub>1</sub>	L <sub>1</sub>	Z <sub>2</sub>	L <sub>2</sub>	Z <sub>3</sub>	L <sub>3</sub>	kg		CL	pln/szt
VS0222005	58/58	50/50	12	70	75	55	75	55	0,375	4	SL02	83,76
VS0222007	78/58	70/50	2	60	99	60	100	55	0,528	4	SL02	83,76
VS0222009	78/78	70/70	16	60	99	60	99	60	0,610	4	SL02	90,52
VS0222011	90/58	80/50	19	60	113	60	113	55	0,614	4	SL02	106,64
VS0222013	90/90	90/90	19	60	116	60	113	60	0,736	4	SL02	89,66
VS0222015	110/58	100/50	1	61	110	65	97	55	0,789	4	SL02	104,12
VS0222017	110/78	100/70	21	61	122	65	115	60	0,905	4	SL02	113,43
VS0222018	110/90	100/90	44	61	168	60	136	70	1,347	4	SL02	130,20
VS0222019	110/110	100/100	44	61	136	70	136	70	1,282	4	SL02	123,86
VS0222021	135/110	125/100	49	64	169	70	169	65	1,699	2	SL02	188,50
VS0222023	135/135	125/125	49	64	169	70	169	70	1,888	2	SL02	234,53
VS0222025	160/110	150/100	36	95	180	70	200	70	1,831	2	SL02	253,84
VS0222027	160/160	150/150	36	95	200	70	200	70	2,493	2	SL02	329,52

### Trójnik 67°30'

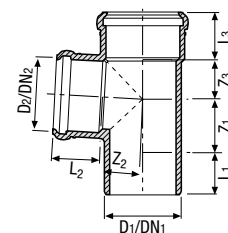
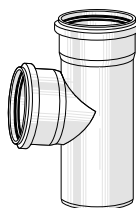
67°30' branch  
Culotte 67°30'



KOD	D <sub>1</sub> /D <sub>2</sub>	DN <sub>1</sub> /DN <sub>2</sub>	Z <sub>1</sub>	L <sub>1</sub>	Z <sub>2</sub>	L <sub>2</sub>	Z <sub>3</sub>	L <sub>3</sub>	kg		CL	pln/szt
VS0223005	58/58	50/50	20	70	45	55	45	55	0,326	4	SL02	80,38
VS0223007	78/58	70/50	15	60	63	60	60	55	0,443	4	SL02	77,62
VS0223009	78/78	70/70	26	60	61	60	60	60	0,532	4	SL02	83,76
VS0223015	110/58	100/50	11	61	75	65	65	55	0,459	4	SL02	93,91
VS0223017	110/78	100/70	22	61	61	65	65	60	0,756	4	SL02	104,55
VS0223019	110/110	100/100	58	61	84	70	84	70	1,062	4	SL02	114,51

### Trójnik 87°30'

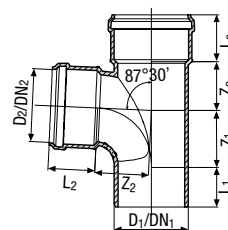
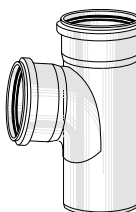
87°30' branch  
Culotte 87°30'



KOD	D <sub>1</sub> /D <sub>2</sub>	DN <sub>1</sub> /DN <sub>2</sub>	Z <sub>1</sub>	L <sub>1</sub>	Z <sub>2</sub>	L <sub>2</sub>	Z <sub>3</sub>	L <sub>3</sub>	kg		CL	pln/szt
VS0224005	58/58	50/50	28	70	32	55	32	55	0,310	4	SL02	88,19
VS0224007	78/58	70/50	27	60	43	60	43	55	0,419	4	SL02	83,76
VS0224009	78/78	70/70	37	60	43	60	43	60	0,474	4	SL02	90,52
VS0224015	110/58	100/50	47	61	61	65	27	55	0,680	4	SL02	104,33
VS0224017	110/78	100/70	60	61	61	65	43	55	0,774	4	SL02	113,43
VS0224018	100/110	100/90	78	91	91	60	58	70	1,110	4	SL02	130,20
VS0224019	110/110	100/100	78	61	58	70	58	70	0,988	4	SL02	123,86
VS0224021	135/110	125/100	90	64	72	70	72	65	1,402	2	SL02	188,50
VS0224023	135/135	125/125	90	64	72	70	72	70	1,431	2	SL02	236,62

### Trójnik profilowany 87°30'

Sweep branch 87°30'  
Té pied de biche 87°30'

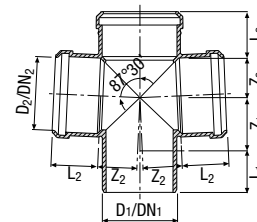
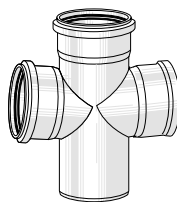


KOD	D <sub>1</sub> /D <sub>2</sub>	DN <sub>1</sub> /DN <sub>2</sub>	Z <sub>1</sub>	L <sub>1</sub>	Z <sub>2</sub>	L <sub>2</sub>	Z <sub>3</sub>	L <sub>3</sub>	kg		CL	pln/szt
VS0238011	110/110	100/100	78	65	80	70	72	70	1,098	4	SL02	172,99



### Czwórnik prosty 87°30'

Double branch 87°30'  
Embranchement double  
parallèle 87°30'

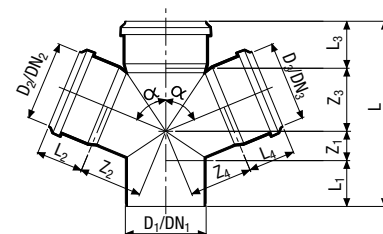
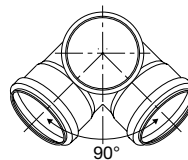
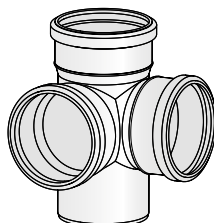


KOD	D <sub>1</sub> /D <sub>2</sub>	DN <sub>1</sub> /DN <sub>2</sub>	Z <sub>1</sub>	L <sub>1</sub>	Z <sub>2</sub>	L <sub>2</sub>	Z <sub>3</sub>	L <sub>3</sub>	kg		CL	pln/szt
VS0225011	110/110	100/100	78	61	58	70	58	70	1,168	2	SL02	318,08
VS0225013	135/110	125/100	80	84	74	71	72	70	1,510	2	SL02	438,28

Odgąłęzienie zgrzewane. - Welded. - Dérivation soudée.

### Czwórnik narożny 87°30'

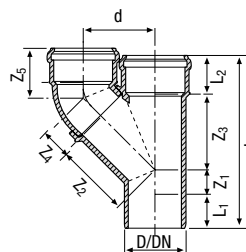
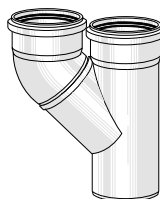
Corner branch 87°30'  
Embranchement multiple 87°30'



KOD	D <sub>1/2/3</sub>	DN <sub>1/2/3</sub>	α	Z <sub>1</sub>	Z <sub>2/4</sub>	Z <sub>3</sub>	L	L <sub>1</sub>	L <sub>2/4</sub>	L <sub>3</sub>	kg				HxLxP	CL	pln/szt
VS0225014	110/110/110	100/100/100	87°30'	54	72	65	242	63	58	61	0,840	5	20	60	955x800x1200	SL02	284,35

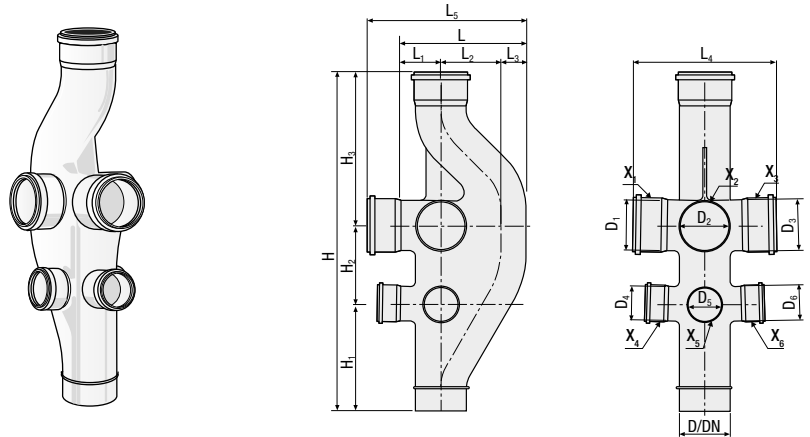
### Trójnik równoległy

Parallel branch  
Culotte parallèle



KOD	D	DN	Z <sub>1</sub>	Z <sub>2</sub>	Z <sub>3</sub>	Z <sub>4</sub>	Z <sub>5</sub>	d	L <sub>1</sub>	L	kg		CL	pln/szt
VS0233011	110	100	44	136	136	46	89	129	61	310	1,548	2	SL02	454,00

**VBF**  
**Rozgałęzienie**  
**kanalizacyjno-**  
**odpowietrzające**  
 Ventilation branch  
 Embranchement multi  
 connexions



KOD	D	DN	D <sub>1</sub> /D <sub>2</sub> /D <sub>3</sub>	D <sub>4</sub> /D <sub>5</sub> /D <sub>6</sub>	L	L <sub>1</sub>	L <sub>2</sub>	L <sub>3</sub>	L <sub>4</sub>	L <sub>5</sub>	H	H <sub>1</sub>	H <sub>2</sub>	H <sub>3</sub>	CL	pln/szt
VS0273X <sub>1</sub> X <sub>2</sub> X <sub>3</sub> X <sub>4</sub> X <sub>5</sub> X <sub>6</sub> *	110	100	110	78	265	85	130	50	300	345	780	245	170	365	SL02	**

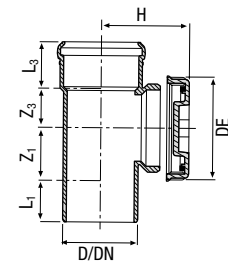
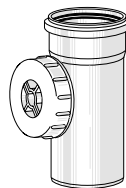
\* X=0 w przypadku wlotu bez kielicha, X=1 w przypadku wlotu z kielichem. - X=0 if the inlet has no socket, X=1 if the socket is welded to the inlet. - Le "X" n'a aucune valeur en cas d'absence d'emboiture, ou 1 en cas de présence de l'emboiture.


Zamówienie przewiduje minimalną ilość. - A minimum quantity per order is foreseen. - Une quantité minimum sera demandée pour toute commande.

\*\* Na zapytanie. - On request. - Sur demande.

**Rewizja (czyszczak)**

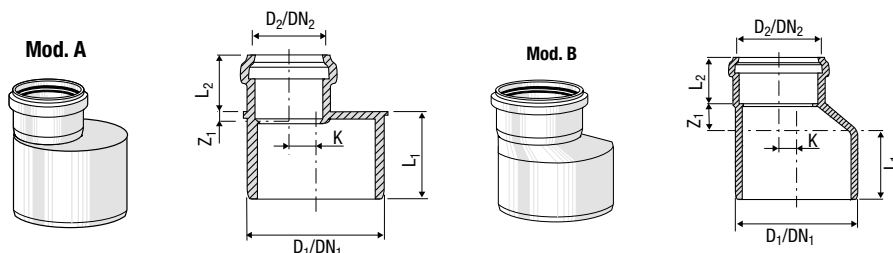
Inspection opening  
 with screw cap  
 Té avec bouchon vissé



KOD	D	DN	Z <sub>1</sub>	L <sub>1</sub>	Z <sub>3</sub>	L <sub>3</sub>	H	DE	kg		CL	pln/szt
VS0227005	58	50	28	70	32	55	72	90	0,405	4	SL02	106,03
VS0227007	78	70	37	60	43	60	82	120	0,619	4	SL02	115,77
VS0227011	110	100	78	61	58	70	110	150	1,087	4	SL02	163,29
VS0227013	135	125	90	64	72	65	115	150	1,455	4	SL02	339,05
VS0227015	160	150	80	95	80	70	120	150	1,768	2	SL02	429,40

## Redukcja niecentryczna

Eccentric increaser  
Réduction excentrée



KOD	D <sub>1</sub> /D <sub>2</sub>	DN <sub>1</sub> /DN <sub>2</sub>	Mod.	K	Z <sub>1</sub>	L <sub>1</sub>	L <sub>2</sub>	kg		CL	pln/szt
VS0226005	78/58	70/50	A	5	10	60	55	0,190	4	SL02	33,30
VS0226007	90/58	90/50	A	11	10	67	55	0,227	4	SL02	47,08
VS0226009	90/78	90/70	A	0	15	67	60	0,239	4	SL02	49,20
VS0226011	110/58	100/50	A	22	10	70	55	0,313	4	SL02	43,01
VS0226013	110/78	100/70	A	11	10	70	60	0,349	4	SL02	43,70
VS0226015	110/90	100/90	A	5	10	70	60	0,343	4	SL02	56,61
VS0226017	135/110	125/100	B	7	15	85	65	0,565	4	SL02	71,90
VS0226019	160/110	150/100	B	23	35	90	65	0,769	4	SL02	95,20
VS0226021	160/135	150/125	B	10	32	90	70	0,817	4	SL02	106,64

## Korek

Cap  
Bouchon de visite



KOD	D	DN	L <sub>1</sub>	L	kg		CL	pln/szt
VS0230005	58	50	50	65	0,177	4	SL02	23,56
VS0230007	78	70	51	66	0,147	4	SL02	33,91
VS0230009	90	90	51	66	0,162	4	SL02	42,19
VS0230011	110	100	56	72	0,287	4	SL02	50,49
VS0230013	135	125	60	77	0,406	4	SL02	73,77
VS0230015	160	150	45	63,5	0,449	4	SL02	95,20

## Opaska do korków

Fastening clip  
Collier pour bouchons

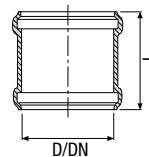
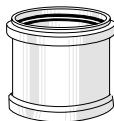


KOD	D	DN	L <sub>1</sub>	L	kg		CL	pln/szt
VS0250005	58/50	59	69	41	0,075	10	SL02	168,79
VS0250007	78/70	79	99	41	0,087	10	SL02	213,10
VS0250009	90/90	91	102	41	0,094	10	SL02	218,17
VS0250011	110/100	111	123	46	0,115	10	SL02	220,54
VS0250013	135/125	136	146	47	0,132	10	SL02	234,10
VS0250015	160/150	161	181	47	0,142	10	SL02	262,94

## Mufa przesuwna

Sliding sleeve

Manchon coulissant

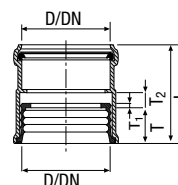


KOD	D	DN	L	kg		CL	pln/szt
VS0228005	58	50	105	0,165	4	SL02	29,67
VS0228007	78	70	107	0,233	4	SL02	30,75
VS0228011	110	100	117	0,393	4	SL02	40,92
VS0228013	135	125	126	0,535	4	SL02	67,22
VS0228015	160	150	147	0,742	4	SL02	81,86

## Mufa dwukielichowa

Bi-joint

Manchon femelle-femelle  
pour tube lisse



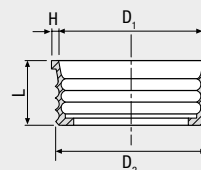
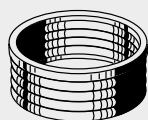
KOD	D	DN	T	T <sub>1</sub>	T <sub>2</sub>	L	kg		CL	pln/szt
VS0229005	58	50	48	5	15	119	0,228	4	SL02	26,79
VS0229007	78	70	48	6	16	119	0,303	4	SL02	29,82
VS0229009	90	90	47	6	16	124	0,360	4	SL02	31,97
VS0229011	110	100	48	6	16	124	0,484	4	SL02	34,13
VS0229013	135	125	65	6	16	145	0,726	4	SL02	58,33
VS0229015	160	150	65	6	16	147	0,858	4	SL02	68,69

## Części zamienne - Spare parts - Pièces de rechange

### Manszet gumowy

Grommet

Joint de jonction

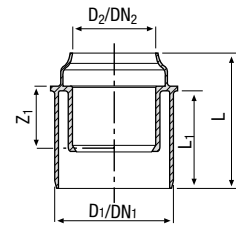


KOD	D	DN	D <sub>1</sub>	D <sub>2</sub>	H	L	kg				HxLxP	CL	pln/szt
VS0261005	58	50	59	64	5,5	50	0,037	20	160	800	1030x800x1200	SL02	7,45
VS0261007	78	70	79	84	5,5	50	0,043	20	160	960	1030x800x1200	SL02	8,49
VS0261009	90	90	91	95	5,5	55	0,053	20	160	800	1030x800x1200	SL02	10,61
VS0261011	110	100	111	116	5,5	66	0,071	20	160	640	1010x800x1200	SL02	11,54
VS0261013	135	125	136	141	5,5	66	0,115	20	160	640	1010x800x1200	SL02	21,01
VS0261015	160	150	161	166	5,5	55	0,134	20	160	800	1030x800x1200	SL02	26,76

### Kielich łączący PP/HDPE - SILERE

Connector PP/HDPE - SILERE

Pièces de raccordement  
PP/HDPE - SILERE

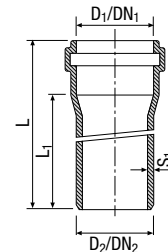
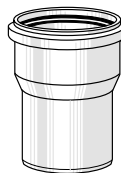


KOD	D <sub>1</sub> /D <sub>2</sub>	DN <sub>1</sub> /DN <sub>2</sub>	Z <sub>1</sub>	L	L <sub>1</sub>	kg		CL	pln/szt
VS0231001	58/40	50/40	30	67	50	0,035	4	SL02	26,32
VS0231003	58/50	50/50	25	86	60	0,043	4	SL02	27,80
VS0231005	78/50	70/50	37	80	60	0,052	4	SL02	28,19
VS0231007	78/75	70/70	0	116	60	0,060	4	SL02	28,19
VS0231013	135/125	125/125	0	138	72,5	0,205	2	SL02	42,01

### Kielich łączący SILERE - PP/HDPE

Connector SILERE - PP/HDPE

Pièces de raccordement  
SILERE - PP/HDPE

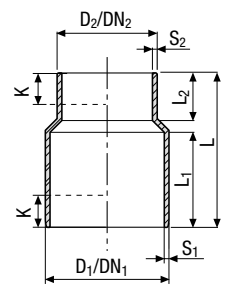
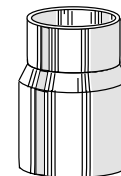
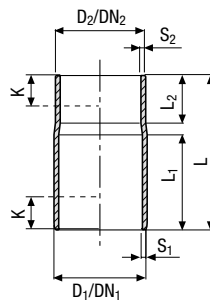
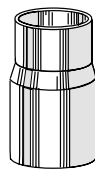


KOD	D <sub>1</sub> /D <sub>2</sub>	DN <sub>1</sub> /DN <sub>2</sub>	L	L <sub>1</sub>	s <sub>1</sub>	kg		CL	pln/szt
VS0237003	58/50	50/50	145	60	2,5	0,134	4	SL02	70,81
VS0237007	78/75	70/70	150	70	3,5	0,203	4	SL02	72,11
VS0237013	135/125	125/125	190	75	3,5	0,610	2	SL02	208,68

### Złączka łącząca HDPE - SILERE

Connectors HDPE - SILERE

Réductions de raccordement  
HDPE - SILERE

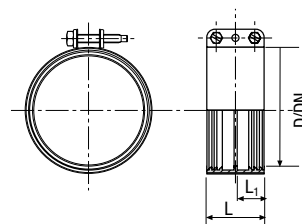
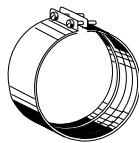


KOD	D <sub>1</sub> /D <sub>2</sub>	DN <sub>1</sub> /DN <sub>2</sub>	S <sub>1</sub> /S <sub>2</sub>	L	L <sub>1</sub>	L <sub>2</sub>	K	kg				HxLxP	CL	pln/szt
VS0336061	58/56	50/50	3	95	60	30	15	0,047	20	160	1600	1130x800x1200	SL02	28,41
VS0336063	78/63	70/60	3	100	60	30	15	0,064	20	160	960	1060x800x1200	SL02	32,66

## Łącząca opaska zaciskowa

Jointing belt

Collier de raccordement  
à compression

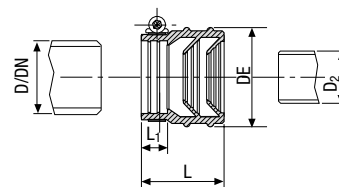
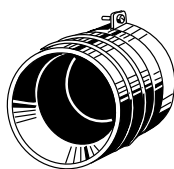


KOD	D	DN	L <sub>1</sub>	L	kg				HxLxP	CL	pln/szt
VS0271005	58	50	20,5	44	0,136	20	160	800	1030x800x1200	SL02	52,55
VS0271007	78	70	22,5	48	0,155	20	160	800	1030x800x1200	SL02	46,18
VS0271011	110	100	25,5	55	0,216	20	160	640	1010x800x1200	SL02	46,18
VS0271013	135	125	28	60	0,272	10	80	400	1030x800x1200	SL02	81,29
VS0271015	160	150	30	65	0,359	10	80	400	1030x800x1200	SL02	111,28

## Gumowa złączka do połączeń z rurami żeliwnymi

Rubber connector

Manchon de raccordement  
aux tubes en fonte

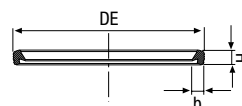
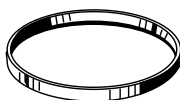


KOD	D	DN	D <sub>2</sub>	DE	L <sub>1</sub>	L	kg		CL	pln/szt
VS0272005	58	50	40/56	77	20	63	0,142	20	SL02	35,42
VS0272007	78	70	56/75	97	20	77	0,213	20	SL02	45,57
VS0272011	110	100	104/110	133	20	95	0,305	20	SL02	73,77

## Uszczelka jednowargowa HS

Single lip seal HS

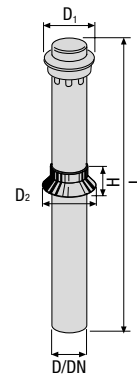
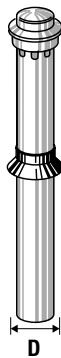
Joints à simple lèvre HS



KOD	D/DN	DE	H	b	kg				HxLxP	CL	pln/szt
VS0391003	40/40	51	8	7	0,005	50	-	-	930x800x1200	VA02	2,32
VS0391005	50/50	61	8	7	0,007	50	-	-	930x800x1200	VA02	2,32
VS0262005	58/50	70	9	7	0,010	20	400	2800	935x800x1200	VA02	4,83
VS0391011	75/70	86	8	7	0,010	20	-	-	130x800x1200	VA02	2,84
VS0262007	78/70	90	9	7	0,011	20	400	2800	935x800x1200	VA02	5,39
VS0391013	90/90	104	9	7	0,013	20	400	3200	1050x800x1200	VA02	3,51
VS0391015	110/100	124	9	8	0,020	20	400	3200	1050x800x1200	VA02	3,61
VS0391017	125/125	142	10	9	0,029	20	400	3200	1010x800x1200	VA02	5,68
VS0262013	135/125	152	12	9,5	0,038	20	400	2800	935x800x1200	VA02	9,54
VS0391019	160/150	180	12	11	0,046	20	400	3200	1010x800x1200	VA02	7,48

## Rura wywiewna PP z kołnierzem szara

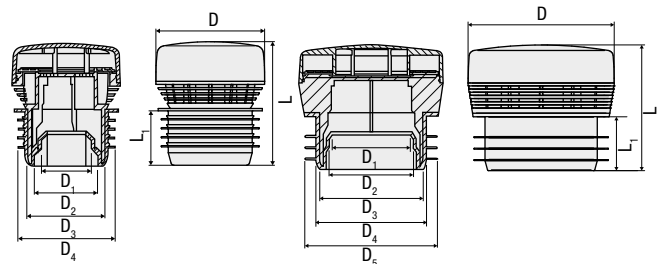
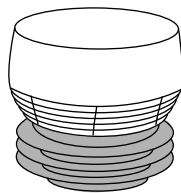
Grey PP vent cowl  
Chapeau de ventilation en PP gris



KOD	D	DN	D <sub>1</sub>	D <sub>2</sub>	L	H	kg				HxLxP	CL	pln/szt
VS0394001	50	50	140	91	720	45	0,242	10	30	120	1090x800x1200	PP02	185,52
VS0394003	75	70	200	121	720	52	0,369	5	15	60	1105x800x1200	PP02	206,13
VS0394005	110	100	200	166	720	55	0,759	5	15	45	1200x800x1200	PP02	221,18

## Zawór napowietrzający

Air admittance valve  
Aérateur



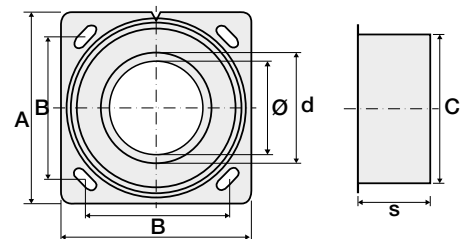
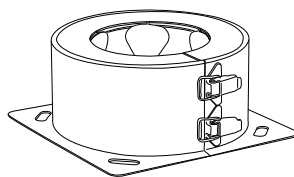
VS0700401

VS0700402

KOD	D	D <sub>1</sub>	D <sub>2</sub>	D <sub>3</sub>	D <sub>4</sub>	D <sub>5</sub>	L	L <sub>1</sub>	kg		CL	pln/szt
VS0700401	70	32	40	50	63	-	79,5	35	0,102	12	VA02	260,17
VS0700402	125	70	75	90	100	110	108	46	0,358	6	VA02	479,38

## Kołnierz ogniowy Collarwings EI 240

Collarwings fire stop collar EI 240  
Colliers coupe feu  
Collarwings EI 240

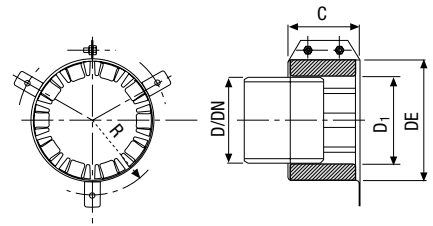
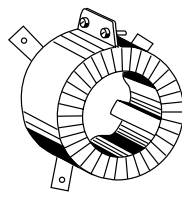


KOD	De (rura - pipe - tube)	d	A	B	C	s	kg		CL	pln/szt
VS0411005	56-58	68	142	106	120	49,5	0,729	1	VA02	455,04
VS0411010	78-80	94	188	133	156	49,5	1,113	1	VA02	518,00
VS0411011	90	106	193	145	171	89,5	2,117	1	VA02	749,07
VS0411012	100	116	212	156	190	89,5	2,315	1	VA02	749,07
VS0411013	110	128	225	167	202	89,5	2,716	1	VA02	749,07
VS0411016	135	155	260	193	238	89,5	3,520	1	VA02	1 036,12
VS0411017	160	180	294	217	272	89,5	4,311	1	VA02	1 480,08

## Kołnierz ogniowy EI 180

Fire collar EI 180

Manchon coupe feu EI 180



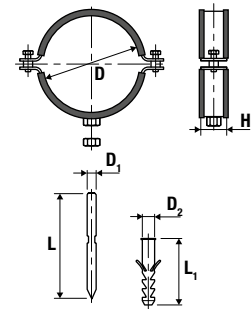
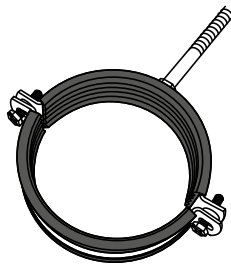
KOD	D	DN	D <sub>1</sub>	DE	C	kg		CL	pln/szt
VS0270005 •	58	50	65	95	80	0,313	1	VA02	584,67
VS0270007 •	78/90	70/90	95	140	80	0,764	1	VA02	771,01
VS0270013 •	135	125	144	195	110	1,140	1	VA02	1 056,81
VS0270015 •	160	150	166	215	120	1,228	1	VA02	1 140,18

• Wyprzedaż. - Sell out. - Fin de stock.

## Ocynkowana obejma M10 z mocowaniem, z gumowym podkładem antywibracyjnym do punktów stałych i przesuwnych

M10 galvanized pipe clip with anchor and anti-vibration strip, for fixed and sliding point

Collier acier M10 avec cheville et point fixe et point coulissant et joint anti vibration



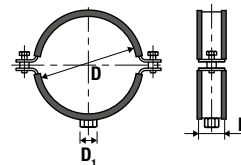
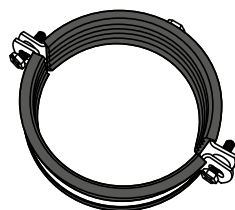
KOD	D	H	L	L <sub>1</sub>	D <sub>1</sub>	D <sub>2</sub>	Śruba Screw - Vis	kg		CL	pln/szt
VS0395024	58	30	120	75	M10	14	M6x20	0,277	50	VA02	31,92
VS0395027	78	30	120	75	M10	14	M6x20	0,309	25	VA02	36,15
VS0395028	90	30	120	75	M10	14	M6x20	0,354	25	VA02	39,66
VS0395029	110	30	120	75	M10	14	M6x20	0,399	25	VA02	40,28
VS0395031	135	30	120	75	M10	14	M6x20	0,469	25	VA02	48,69
VS0395032	160	30	120	75	M10	14	M6x20	0,522	25	VA02	55,39




Ocynkowana obejma M10  
 z gumowym podkładem  
 antywibracyjnym  
 do punktów stałych  
 i przesuwnych

M10 galvanized pipe clip  
 with anti-vibration strip, for  
 fixed and sliding point

Collier acier M10 avec point  
 fixe et point coulissant  
 et joint anti vibration

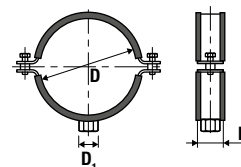
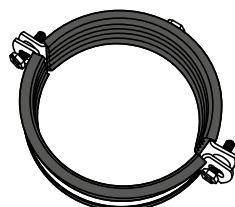



KOD	D	D <sub>1</sub>	H	kg		CL	pln/szt
VS0396084	58	M10	30	0,221	50	VA02	27,13
VS0396087	78	M10	30	0,253	25	VA02	31,25
VS0396088	90	M10	30	0,291	25	VA02	34,55
VS0396089	110	M10	30	0,346	25	VA02	35,12
VS0396091	135	M10	30	0,407	25	VA02	45,39
VS0396092	160	M10	30	0,469	25	VA02	50,28

Ocynkowana  
 obejma G1/2" i G1" z  
 gumowym podkładem  
 antywibracyjnym  
 do punktów stałych  
 i przesuwnych

G1/2" and G1" galvanized pipe  
 clip with anti-vibration strip,  
 for fixed and sliding point

Collier acier G1/2" avec  
 point fixe et point coulissant  
 et joint anti vibration

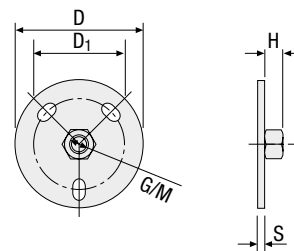
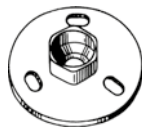


KOD	D	D <sub>1</sub>	H	kg		CL	pln/szt
VS0396064	58	G1/2"	30	0,241	50	VA02	27,59
VS0396067	78	G1/2"	30	0,272	25	VA02	31,82
VS0396068	90	G1/2"	30	0,319	25	VA02	35,17
VS0396069	110	G1/2"	30	0,365	25	VA02	35,79
VS0396071	135	G1/2"	30	0,427	25	VA02	46,21
VS0396072	160	G1/2"	30	0,484	25	VA02	51,21

### Okrągły kołnierz ze stali ocynkowanej do mocowania do ściany

Galvanized steel flange for fixing to wall

Bride de fixation



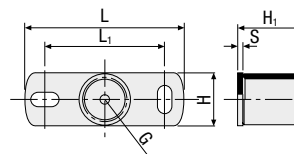
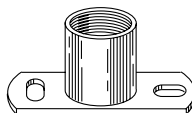
KOD	D	G/M	D <sub>1</sub>	H	s	kg		CL	pln/szt
VS0398001 •	70	G 1/2"	50	15	4	0,141	100	VA02	17,02

• Wyprzedaż. - Sell out. - Fin de stock.

### Prostokątny kołnierz ze stali ocynkowanej do mocowania do ściany

Galvanized steel plate for fixing to wall

Bride en acier zingué pour fixation sur paroi

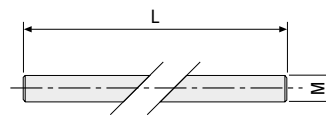
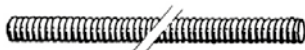


KOD	L	G	L <sub>1</sub>	H	H <sub>1</sub>	s	kg		CL	pln/szt
VS0398004	120	G1/2"	82	40	20	4	0,165	25	VA02	34,42
VS0398005	120	1"	90	40	50	4	0,236	25	VA02	37,39
VS0398007	80	M10	52	30	13	2	0,060	25	VA02	18,41

### Pręt gwintowany

Threaded rod

Tige filetée



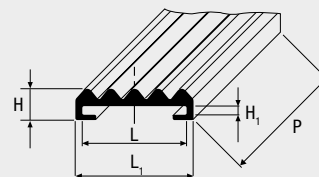
KOD	M	L	kg		CL	pln/szt
VS0408001	M10	1000	0,418	1	VA02	18,67


## Akcesoria - Accessories - Accessoires

### Podkład antywibracyjny do obejmy

Anti-vibration strip for pipe clips

Bande de joint anti-vibratile pour colliers

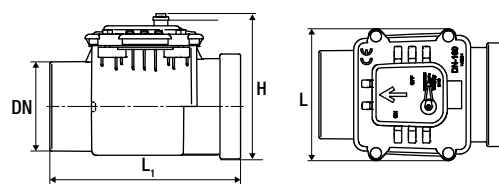
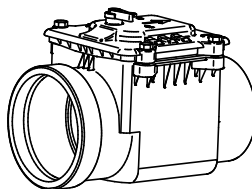



KOD	L	L <sub>1</sub>	H	H <sub>1</sub>	P (m)	kg		CL	pln/szt
VS0399222	30	36	9	3	30	5,427	1	VA02	1 050,70
VS0399224	40	46	9	4	10	2,393	1	VA02	402,09

### Zawór zwrotny klapowy

Back flow preventing valve with locking lever

Clapet simple anti retour avec ferm



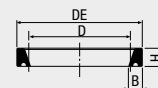
KOD	DN	L	L <sub>1</sub>	H	kg		CL	pln/szt
VS0200112	110	190	310	200	1,420	1	SL02	859,92
VS0200114	125	200	400	270	1,993	1	SL02	949,22
VS0200116	160	235	340	260	2,035	1	SL02	1 031,99


## Części zamienne - Spare parts - Pièces de rechange

### Uszczelka jednowargowa do zaworów zwrotnych

Single-lipped seal for back flow preventing valves

Joint 1 lèvre pour vanne anti reflux




KOD	D/DN	DE	H	B	kg		CL	pln/szt
VS0391015	110/100	123,9	8,9	7,9	0,020	20	VA02	3,61
VS0391017	125/125	142,2	10,2	8,9	0,029	20	VA02	5,68
VS0391019	160/150	179,8	11,5	10,2	0,046	20	VA02	7,48

## Obcinak krążkowy

Pipe cutter  
Coupe tube

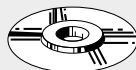


KOD	D	Mod.	kg		CL	pln/szt
VS0458011	6÷76	T1	0,550	1	VA01	622,65
VS0458003	50÷140	T2	1,309	1	VA01	896,76
VS0458005	100÷168	T3	1,384	1	VA01	1 109,79

## Części zamienne - Spare parts - Pièces de rechange

Zapassowe ostrza do  
obcinaka krążkowego

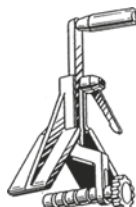
Spare blades  
Lames de rechange




KOD	D	kg		CL	pln/szt
VS0459001	6÷76	0,006	1	VA01	123,33
VS0459003	50÷168	0,025	1	VA01	164,40

## Przyrząd do fazowania rur

Beveling tool  
Chanfreineur

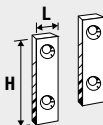



KOD	D	kg		CL	pln/szt
VS0460001	32÷160	0,803	1	VA01	781,73
VS0460003	40÷250	1,385	1	VA01	1 291,83

## Części zamienne - Spare parts - Pièces de rechange

Zapassowe ostrza do fazownika

Spare blades  
Lames de rechange




KOD	D	H	L	kg		CL	pln/szt
VS0460110	32÷160	32	13	0,025	1 para - pair	VA01	294,04
VS0460111	40÷250	34	12	0,025	1 para - pair	VA01	308,85

Pasta silikonowa -  
środek poślizgowy

Lubricant  
Lubrifiant

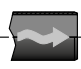
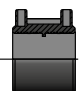
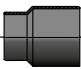

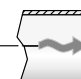
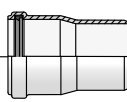
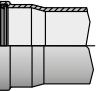
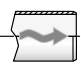
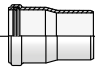

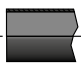


KOD	g	kg		CL	pln/szt
VS0900001	150	0,161	50	VA02	11,63
VS0900003	250	0,269	50	VA02	13,33
VS0900005	1000	1,000	1	VA02	56,57
VS0900007	5000	5,000	1	VA02	261,98




# ŁĄCZENIE SILERE Z SYSTEMAMI Z INNYCH MATERIAŁÓW

## CONNECTION OF SLEEVE WITH PIPES IN DIFFERENT MATERIALS RACCORDEMENT SILERE AVEC TUBES DE MATIERE DIFFERENTE


Łączone systemy Connection systems Système de raccordement	Niezbędne elementy Necessary parts Articles nécessaires	D <sub>1</sub>	D <sub>2</sub>
	VS0231001	De 40 mm	De 58 mm
<p>Rura - pipe - tube Valsir PP/PP3, Valsir Triplus® Valsir HDPE, PVC, ABS, ecc.</p> <p>Łącząca złączka Silere®</p> <p>Rura Valsir Silere®</p> <p>D<sub>1</sub> D<sub>2</sub></p> <p>Silere® connection fittings</p> <p>Valsir Silere® pipe</p> <p>Raccord de liaison Silere®</p> <p>Valsir Silere® tube</p>	VS0231003	De 50 mm	De 58 mm
	VS0231005	De 50 mm	De 78 mm
	VS0231007	De 75 mm	De 78 mm
	VS0231013	De 125 mm	De 135 mm
	VS0271005	De 58 mm	De 58 mm
<p>Rura Valsir Silere®</p> <p>Opaska zaciskowa</p> <p>Rura żeliwna - SML</p> <p>D<sub>1</sub> D<sub>2</sub></p> <p>Valsir Silere® pipe</p> <p>Compression connection band</p> <p>Cast iron- SML pipe</p> <p>Valsir Silere® tube</p> <p>Collier de raccordement à compression</p> <p>Tube acier-SML</p>	VS0271007	De 78 mm	De 78 mm
	VS0271011	De 110 mm	De 110 mm
	VS0271013	De 135 mm	De 135 mm
	VS0271015	De 160 mm	De 160 mm
<p>Metalowa lub plastikowa rura</p> <p>Gumowa złączka</p> <p>Rura Valsir Silere®</p> <p>D<sub>1</sub> D<sub>2</sub></p> <p>Metal or plastic pipe</p> <p>Connection sleeve</p> <p>Valsir Silere® pipe</p> <p>Tube metal ou plastique</p> <p>Manchon de raccordement</p> <p>Valsir Silere® tube</p>	VS0272005	De 40÷56 mm	De 58 mm
	VS0272007	De 56÷75 mm	De 78 mm
	VS0272011	De 104÷110 mm	De 110 mm


Łączone systemy Connection systems Système de raccordement				Niezbędne elementy Necessary parts Articles nécessaires	D <sub>1</sub>	D <sub>2</sub>
<p>Rura Valsir HDPE</p>  <p>D<sub>1</sub></p> <p>Mufa Valsir HDPE</p>  <p>D<sub>1</sub></p> <p>Łącząca złączka HDPE</p>  <p>D<sub>2</sub></p> <p>Rura Valsir Silere®</p> 	<p>VS0336061 + VS0350004</p>	De 56 mm	De 58 mm			
<p>Valsir HDPE pipe</p> <p>Valsir HDPE sleeve</p> <p>HDPE connection fitting</p> <p>Valsir Silere® pipe</p>	<p>VS0336063 + VS0350005</p>	De 63 mm	De 78 mm			
<p>Valsir HDPE tube</p> <p>Manchon Valsir HDPE</p> <p>Raccord de liaison HDPE</p> <p>Valsir Silere® tube</p>						
	VS0237003	De 58 mm	De 50 mm			
<p>Rura Valsir Silere®</p>  <p>D<sub>1</sub></p> <p>Łącząca złączka Silere®</p>  <p>D<sub>2</sub></p> <p>Rura- pipe - tube Valsir PP/PP3 Valsir Triplus® PVC, ecc.</p> 						
<p>Valsir Silere® pipe</p> <p>Valsir Silere® tube</p> <p>Silere® connection fitting</p> <p>Raccord de liaison Silere®</p> <p>Valsir PP/PP3 Valsir Triplus® PVC, ecc.</p>	VS0237007	De 78 mm	De 75 mm			
	VS0237013	De 135 mm	De 125 mm			
	VS0237003 + VS0324003	De 58 mm	De 50 mm			
<p>Rura Valsir Silere®</p>  <p>D<sub>1</sub></p> <p>Łącząca złączka Silere®</p>  <p>D<sub>2</sub></p> <p>HDPE kielich z uszczelką</p>  <p>Rura Valsir HDPE</p> 						
<p>Valsir Silere® pipe</p> <p>Silere® connection fitting</p> <p>HDPE push-fit ring seal socket</p> <p>Valsir HDPE pipe</p>	VS0237007 + VS0324007	De 78 mm	De 75 mm			
<p>Valsir Silere® tube</p> <p>Raccord de liaison Silere®</p> <p>Machon à emboiter HDPE</p> <p>Valsir HDPE tube</p>	VS0237013 + VS0324003	De 135 mm	De 125 mm			

LISTA TOWARÓW  
LIST OF PRODUCTS  
LISTE DES ARTICLES

KOD	str.		CL	pln	KOD	str.		CL	pln	KOD	str.		CL	pln
VS0200112	19	1	SL02	859,92	VS0221021	5	4	SL02	58,08	VS0226019	11	4	SL02	95,20
VS0200114	19	1	SL02	949,22	VS0221023	5	4	SL02	61,25	VS0226021	11	4	SL02	106,64
VS0200116	19	1	SL02	1 031,99	VS0221025	6	4	SL02	61,93	VS0227005	10	4	SL02	106,03
VS0220001	4	4	SL01	28,40	VS0221029	6	4	SL02	65,96	VS0227007	10	4	SL02	115,77
VS0220003	4	4	SL01	36,41	VS0221031	5	4	SL02	62,33	VS0227011	10	4	SL02	163,29
VS0220005	4	4	SL01	53,14	VS0221033	5	4	SL02	64,23	VS0227013	10	4	SL02	339,05
VS0220007	4	16	SL01	87,24	VS0221035	6	4	SL02	67,22	VS0227015	10	2	SL02	429,40
VS0220009	4	16	SL01	155,06	VS0221037	6	4	SL02	63,19	VS0228005	12	4	SL02	29,67
VS0220011	4	16	SL01	222,85	VS0221039	6	4	SL02	70,61	VS0228007	12	4	SL02	30,75
VS0220021	4	4	SL01	30,23	VS0221041	5	4	SL02	97,32	VS0228011	12	4	SL02	40,92
VS0220023	4	4	SL01	38,47	VS0221043	5	4	SL02	99,23	VS0228013	12	4	SL02	67,22
VS0220025	4	4	SL01	56,35	VS0221045	6	4	SL02	100,09	VS0228015	12	4	SL02	81,86
VS0220027	4	16	SL01	91,84	VS0221049	6	4	SL02	113,90	VS0229005	12	4	SL02	26,79
VS0220029	4	16	SL01	162,83	VS0221051	5	4	SL02	134,84	VS0229007	12	4	SL02	29,82
VS0220031	4	16	SL01	233,60	VS0221053	5	4	SL02	134,84	VS0229009	12	4	SL02	31,97
VS0220041	4	4	SL01	35,04	VS0221055	6	4	SL02	134,22	VS0229011	12	4	SL02	34,13
VS0220043	4	4	SL01	43,77	VS0221059	6	4	SL02	160,56	VS0229013	12	4	SL02	58,33
VS0220045	4	4	SL01	64,58	VS0222005	7	4	SL02	83,76	VS0229015	12	4	SL02	68,69
VS0220047	4	12	SL01	105,57	VS0222007	7	4	SL02	83,76	VS0230005	11	4	SL02	23,56
VS0220049	4	12	SL01	188,04	VS0222009	7	4	SL02	90,52	VS0230007	11	4	SL02	33,91
VS0220050	4	12	SL01	276,64	VS0222011	7	4	SL02	106,64	VS0230009	11	4	SL02	42,19
VS0220051	4	4	SL01	40,07	VS0222013	7	4	SL02	89,66	VS0230011	11	4	SL02	50,49
VS0220053	4	4	SL01	48,11	VS0222015	7	4	SL02	104,12	VS0230013	11	4	SL02	73,77
VS0220055	4	4	SL01	73,05	VS0222017	7	4	SL02	113,43	VS0230015	11	4	SL02	95,20
VS0220057	4	15	SL01	120,03	VS0222018	7	4	SL02	130,20	VS0231001	13	4	SL02	26,32
VS0220059	4	15	SL01	215,07	VS0222019	7	4	SL02	123,86	VS0231003	13	4	SL02	27,80
VS0220061	4	15	SL01	314,01	VS0222021	7	2	SL02	188,50	VS0231005	13	4	SL02	28,19
VS0220071	4	4	SL01	55,89	VS0222023	7	2	SL02	234,53	VS0231007	13	4	SL02	28,19
VS0220073	4	4	SL01	72,13	VS0222025	7	2	SL02	253,84	VS0231013	13	2	SL02	42,01
VS0220075	4	4	SL01	103,10	VS0222027	7	2	SL02	329,52	VS0232011	7	2	SL02	297,47
VS0220077	4	8	SL01	172,44	VS0223005	8	4	SL02	80,38	VS0233011	9	2	SL02	454,00
VS0220079	4	8	SL01	311,92	VS0223007	8	4	SL02	77,62	VS0237003	13	4	SL02	70,81
VS0220081	4	8	SL01	429,92	VS0223009	8	4	SL02	83,76	VS0237007	13	4	SL02	72,11
VS0220091	4	4	SL01	64,58	VS0223015	8	4	SL02	93,91	VS0237013	13	2	SL02	208,68
VS0220093	4	4	SL01	81,79	VS0223017	8	4	SL02	104,55	VS0238011	8	4	SL02	172,99
VS0220095	4	4	SL01	127,80	VS0223019	8	4	SL02	114,51	VS0250005	11	10	SL02	168,79
VS0220097	4	8	SL01	217,32	VS0224005	8	4	SL02	88,19	VS0250007	11	10	SL02	213,10
VS0220099	4	8	SL01	390,00	VS0224007	8	4	SL02	83,76	VS0250009	11	10	SL02	218,17
VS0220101	4	8	SL01	579,90	VS0224009	8	4	SL02	90,52	VS0250011	11	10	SL02	220,54
VS0220501	5	180	SL01	73,05	VS0224015	8	4	SL02	104,33	VS0250013	11	10	SL02	234,10
VS0220503	5	180	SL01	78,54	VS0224017	8	4	SL02	113,43	VS0250015	11	10	SL02	262,94
VS0220505	5	120	SL01	99,62	VS0224018	8	4	SL02	130,20	VS0261005	12	20	SL02	7,45
VS0220507	5	150	SL01	108,13	VS0224019	8	4	SL02	123,86	VS0261007	12	20	SL02	8,49
VS0220509	5	120	SL01	142,21	VS0224021	8	2	SL02	188,50	VS0261009	12	20	SL02	10,61
VS0220511	5	70	SL01	195,36	VS0224023	8	2	SL02	236,62	VS0261011	12	20	SL02	11,54
VS0221001	5	4	SL02	43,70	VS0225011	9	2	SL02	318,08	VS0261013	12	20	SL02	21,01
VS0221003	5	4	SL02	44,31	VS0225013	9	2	SL02	438,28	VS0261015	12	20	SL02	26,76
VS0221005	6	4	SL02	46,44	VS0225014	9	5	SL02	284,35	VS0262005	14	20	VA02	4,83
VS0221007	6	4	SL02	43,70	VS0226005	11	4	SL02	33,30	VS0262007	14	20	VA02	5,39
VS0221009	6	4	SL02	49,82	VS0226007	11	4	SL02	47,08	VS0262013	14	20	VA02	9,54
VS0221011	5	4	SL02	43,70	VS0226009	11	4	SL02	49,20	VS0270005	16	1	VA02	584,67
VS0221013	5	4	SL02	44,31	VS0226011	11	4	SL02	43,01	VS0270007	16	1	VA02	771,01
VS0221015	6	4	SL02	48,56	VS0226013	11	4	SL02	43,70	VS0270013	16	1	VA02	1 056,81
VS0221017	6	4	SL02	45,78	VS0226015	11	4	SL02	56,61	VS0270015	16	1	VA02	1 140,18
VS0221019	6	4	SL02	49,82	VS0226017	11	4	SL02	71,90	VS0271005	14	20	SL02	52,55



KOD	str.		CL	pln
VS0271007	14	20	SL02	46,18
VS0271011	14	20	SL02	46,18
VS0271013	14	10	SL02	81,29
VS0271015	14	10	SL02	111,28
VS0272005	14	20	SL02	35,42
VS0272007	14	20	SL02	45,57
VS0272011	14	20	SL02	73,77
VS0273XXXXXX	10	-	SL02	*
VS0336061	13	20	SL02	28,41
VS0336063	13	20	SL02	32,66
VS0391003	14	50	VA02	2,32
VS0391005	14	50	VA02	2,32
VS0391011	14	20	VA02	2,84
VS0391013	14	20	VA02	3,51
VS0391015	14	20	VA02	3,61
VS0391017	14	20	VA02	5,68
VS0391019	14	20	VA02	7,48
VS0394001	15	10	PP02	185,52
VS0394003	15	5	PP02	206,13
VS0394005	15	5	PP02	221,18
VS0395024	16	50	VA02	31,92
VS0395027	16	25	VA02	36,15
VS0395028	16	25	VA02	39,66
VS0395029	16	25	VA02	40,28
VS0395031	16	25	VA02	48,69
VS0395032	16	25	VA02	55,39
VS0396064	17	50	VA02	27,59
VS0396067	17	25	VA02	31,82
VS0396068	17	25	VA02	35,17
VS0396069	17	25	VA02	35,79
VS0396071	17	25	VA02	46,21
VS0396072	17	25	VA02	51,21
VS0396084	17	50	VA02	27,13
VS0396087	17	25	VA02	31,25
VS0396088	17	25	VA02	34,55
VS0396089	17	25	VA02	35,12
VS0396091	17	25	VA02	45,39
VS0396092	17	25	VA02	50,28
VS0398001	18	100	VA02	17,02
VS0398004	18	25	VA02	34,42
VS0398005	18	25	VA02	37,39
VS0398007	18	25	VA02	18,41
VS0399222	19	1	VA02	1 050,70
VS0399224	19	1	VA02	402,09
VS0408001	18	1	VA02	18,67
VS0411005	15	1	VA02	455,04
VS0411010	15	1	VA02	518,00
VS0411011	15	1	VA02	749,07
VS0411012	15	1	VA02	749,07
VS0411013	15	1	VA02	749,07
VS0411016	15	1	VA02	1 036,12
VS0411017	15	1	VA02	1 480,08
VS0458011	20	1	VA01	622,65
VS0458003	20	1	VA01	896,76

KOD	str.		CL	pln
VS0458005	20	1	VA01	1 109,79
VS0459011	20	1	VA01	123,33
VS0459003	20	1	VA01	164,40
VS0460001	20	1	VA01	781,73
VS0460003	20	1	VA01	1 291,83
VS0460110	20	1	VA01	294,04
VS0460111	20	1	VA01	308,85
VS0700401	15	12	VA02	260,17
VS0700402	15	6	VA02	479,38
VS0900001	21	50	VA02	11,63
VS0900003	21	50	VA02	13,33
VS0900005	21	1	VA02	56,57
VS0900007	21	1	VA02	261,98

\* Na zapytanie. - On request. - Sur demande.

Handwriting practice sheet with 20 horizontal lines and 10 circular icons on the right side. The icons are: 1. A circle with a horizontal line through the center. 2. A circle with a vertical line through the center. 3. A circle with a flame-like shape inside. 4. A circle with a teardrop shape inside. 5. A circle with a curved line inside. 6. A circle with a swastika-like symbol inside. 7. A circle with a U-shaped line inside. 8. A circle with three teardrop shapes inside. 9. A circle with a spiral shape inside. 10. A circle with a triangle inside. 11. A circle with a vertical line through the center. 12. A circle with a curved line inside.

Handwriting practice sheet with 20 horizontal lines. The first 10 lines are pre-filled with the following symbols from left to right: a vertical bar, a semi-circle, a flame, a crescent moon, a swastika, a hand, a water drop, a spiral, a triangle, and a vertical bar. The remaining 10 lines are blank.

INSTALACJE SANITARNE  
PLUMBING  
BATIMENT

SYSTEMY KANALIZACYJNE  
WASTE SYSTEMS  
SYSTEME EVACUATION



SYSTEMY WODOCIĄGOWE  
PRESSURE POTABLE WATER SYSTEMS  
SYSTEME D'EAU SOUS PRESSION



SYSTEMY WIELOWARSTWOWE  
SUPPLY SYSTEMS  
SYSTEME ALIMENTATION



SPŁUCZKI  
FLUSH SYSTEMS  
RESERVOIR DE CHASSE



ODWODNIENIA  
PRYSZNICOWE  
BATHROOM SYSTEMS  
SYSTEME SALLE DE BAIN



SYFONY  
TRAPS  
SIPHON



OGRZEWANIE PODOGOWE  
RADIANT SYSTEMS  
SYSTEME PLANCHER CHAUFFANT



ODWODNIENIA DACHOWE  
DRAINAGE SYSTEMS  
SYSTEME EVACUATION PLUVIALE



SYSTEM ODZYSKU  
CIEPŁA HRV  
HRV SYSTEM  
SYSTÈME VMC



ACADEMY



SYSTEMY KANALIZACYJNE  
SEWER SYSTEMS  
SYSTEME GRAVITAIRE



UZDATNIANIE WODY  
WATER TREATMENT  
TRAITEMENT EAU



BUDOWNICTWO  
BUILDING  
ASSAINISSEMENT

**valsir**<sup>®</sup>  
QUALITY FOR PLUMBING

L02-4337 - April 2022



Valsir Polska Sp. z o.o.  
ul. Przemysłowa 7A  
32-050 Skawina  
Tel. +4812 276.51.00  
Fax +4812 276.51.01  
e-mail: valsir@valsir.pl  
[www.valsir.pl](http://www.valsir.pl)

